

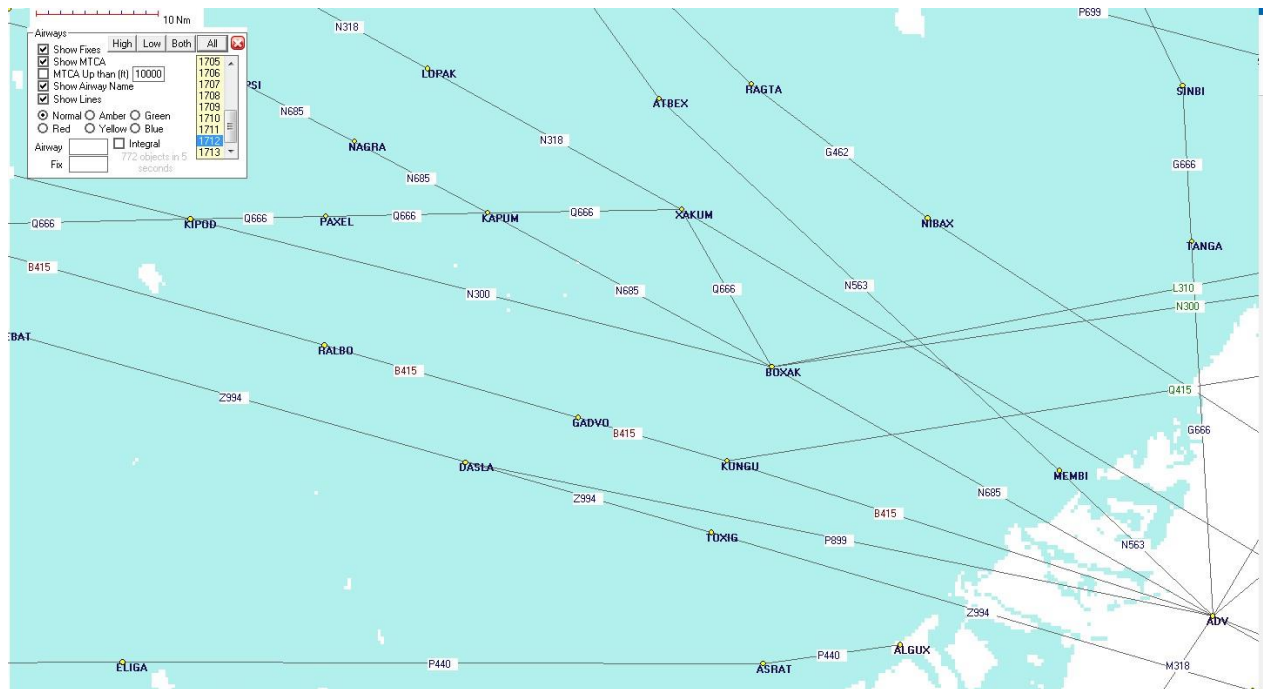
Tuto 5 :

Checking the modifications in the Airways...

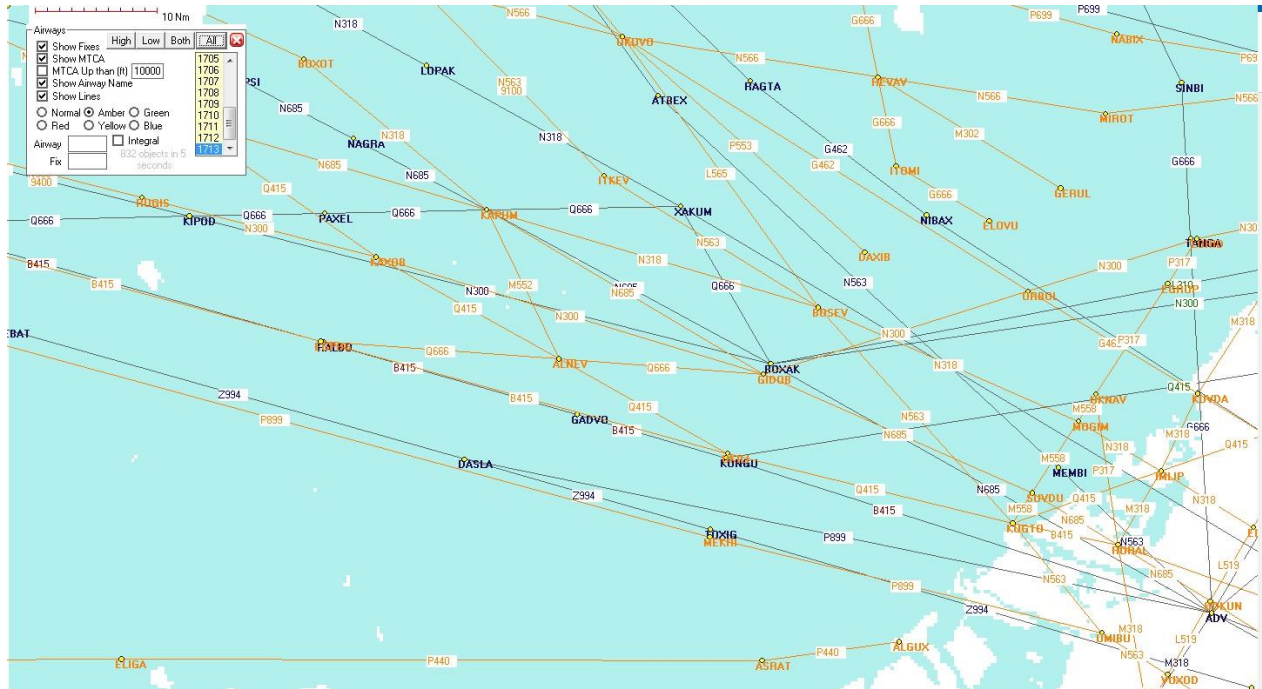
From one cycle to another. You want to know what are the changes in a region...

In your Arinc Decoder, simply open the Map

You plot in this area all airways of actual cycle:

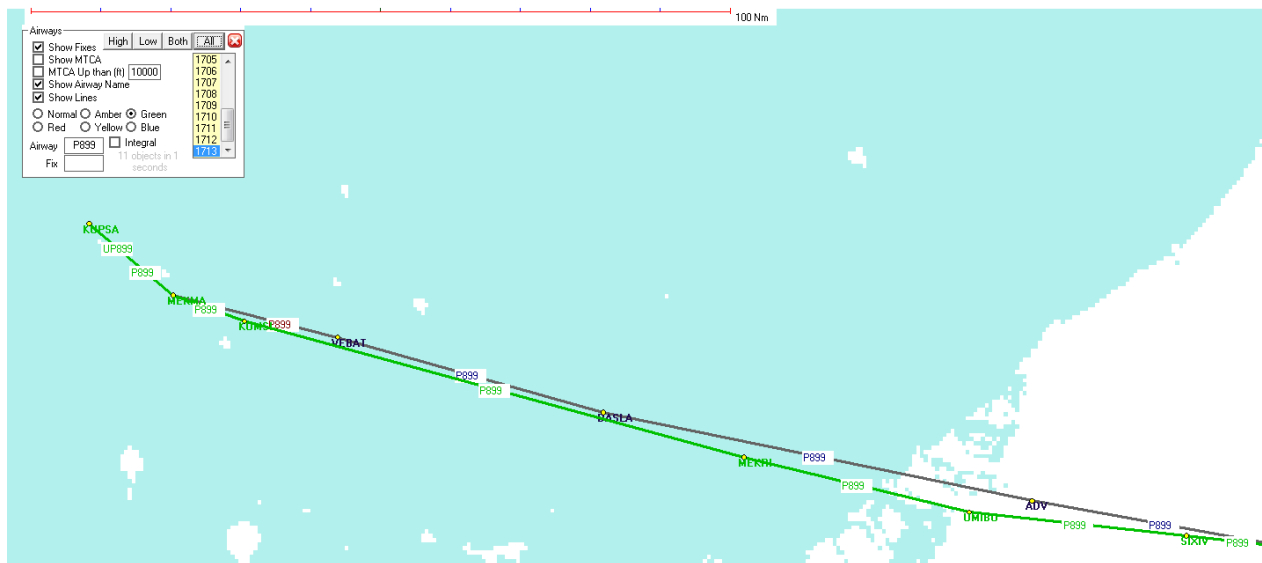


Just after you select the next cycle (in this example, 1713) and clic "All"



Where you see in amber, all new or kept airways, stay in black all airways that are not existing anymore because not overexposed.

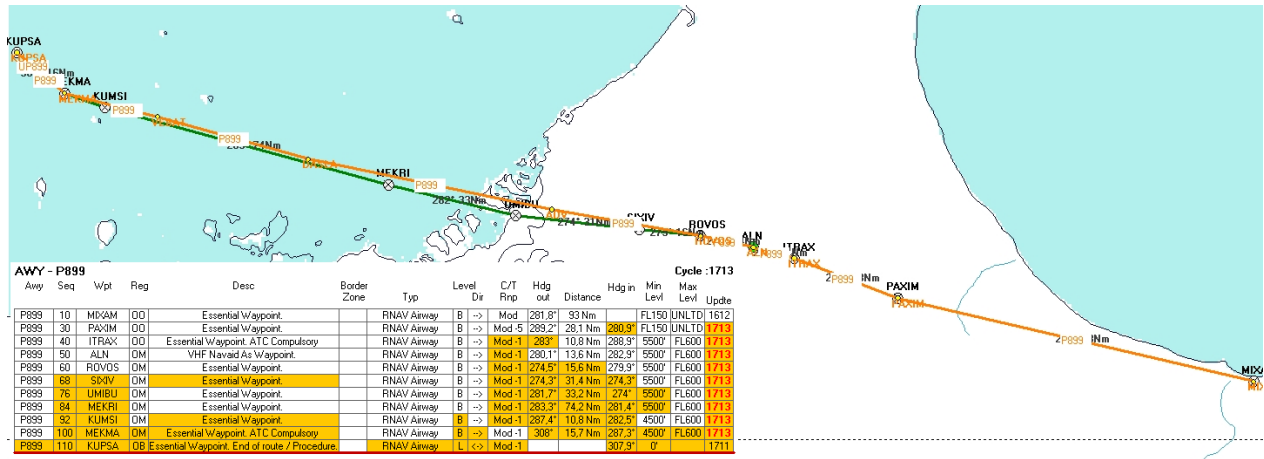
If you want to visualize only the changes of one airway, (in this example, from the bottom, the P899)



You just write P899 in the field, and do the same.

Or you can see in the table that the architecture of this airway is strongly modified...

(clic on button "Changes")



The tooltip information gives you the old information in each field

P899	10	MIXAM	00	Essential Waypoint.
P899	30	PAXIM	00	Essential Waypoint.
P899	40	ITRAX	00	Essential Waypoint. ATC Compulsory
P899	50	ALN	0M	VHF Navaid As Waypoint.
P899	60	ROVOS	0M	Essential Waypoint.
P899	68	SIXIV	0M	Essential Waypoint.
P899	76	UMIBU	0M	Essential Waypoint.
P899	84	MEKRI	0M	Essential Waypoint.
P899	92	KUMSI	0M	Essential Waypoint.
P899	100	MEKMA	0M	Essential Waypoint. ATC Compulsory
P899	110	KUPSA	0B	Essential Waypoint. End of route / Procedure